

Town of Eastend
Communities in Bloom
Competitive Category
2025



Discover Eastend, Saskatchewan...



You'll never want to leave!



The Town of Eastend is situated on Treaty 4 Territory, the original lands of the Cree, Saulteaux, Dakota, Lakota, Nakota, and homeland of the Métis Nations.

COMMUNITIES IN BLOOM EASTEND, SASKATCHEWAN

MONDAY, AUGUST 11th, 2025

- 2:00pm Meet at SW Waste Management Authority Regional Landfill
- 2:45pm Pine Cree Regional Park
- 3:45pm Local Gardens
- 5:00pm Eastend Riverside Cemetery – Tree Memorial Project
- 5:30pm Upcoming Attraction: Eastend Scenic Rail Tours
- 6:00pm Dinner at Jack’s Café
- 7:00pm Committee Meeting with Judges

TUESDAY, AUGUST 12th, 2025

- 9:00 am Tour of the Town - Meet at Town Square
- to 12 pm Library Garden, Swimming Pool &
Splash Park, Streambank Golf Course
Eastend Activity Centre
Eastend Water Plant
SW Emergency Response Centre
Eastend Historical Museum
Wallace Stegner House
Rodeo Grounds Arena
T.rex Discovery Centre
- 12:00pm Lunch at Streambank Clubhouse

Mayor's Message

Greetings to Communities in Bloom from Mayor Alan Howard,

Welcome to Eastend! Established in 1914, our Town has earned national recognition for its natural beauty, unique location, and a wide range of recreational opportunities. Built on strong values and a resilient spirit, Eastend continues to thrive as a vibrant community rooted in history, creativity, a rich prairie identity, and a deep appreciation for our natural surroundings.

During your visit to Eastend you can enjoy our scenic 9-hole Streambank Golf Course, relax at our outdoor Swimming Pool and Splash Park, or take in the action at our new Rodeo Grounds Arena. Don't miss the renowned T.rex Discovery Centre, home to Scotty, Saskatchewan's Official Fossil and the world's largest T.rex ever discovered.

Enjoy a meal at one of our charming local restaurants, swap stories with our residents, and experience the warm hospitality that makes Eastend unforgettable.

Just a short drive from town, you'll find three of the prairies most breathtaking parks: Pine Cree Regional Park, Cypress Hills Interprovincial Park and Grasslands National Park.

Take a step back in time at the Historical Museum or the Wallace Stegner House, the inspiration for his acclaimed book "Wolf Willow". Head up to spectacular Jones Peak for sweeping views of the valley where Crazy Horse and his people camped following the historic Battle of Little Big Horn.

And when the sun sets, stay the night because there's no better place to stargaze than the historic Eastend Wilkinson Memorial Observatory, where the skies over Eastend come alive.

Whether you are a visitor or a resident, I know you will find Eastend to be a place full of charm, character and community spirit. As Mayor of this remarkable town, I encourage you to enjoy all that makes Eastend truly special.

Take your time. Explore. Discover Eastend. You might just never want to leave!

Sincerely
Alan Howard
Mayor of Eastend

Council Representatives:

Val Bidaux
Steve Lacey
Clinton Osinski
Lindsey Stenerson
Casey Vaskevicius
Ted Venema

CIB Committee:

Beth Humphrey – Chairperson
Anne Arnal
Val Bidaux
Debra Haas
Jaime Morvik
Tracy Silzer
Rosa Vázquez

Support Groups:

Garden Club

Tourism and Economic Development Committee:

Val Bidaux
Mayor Alan Howard
Eddie Kim
Corry Matechuk
Rosa Vázquez

Our Biggest Asset – our tireless volunteers.

All those who work so hard to bring our little town's big promise, "*Discover Eastend, Saskatchewan... you'll never want to leave*", to life for locals and visitors alike.

Our Town



Established in 1914, Eastend is a jewel nestled in the historic Frenchman River Valley better known as the “Valley of Hidden Secrets”.

Eastend is located on one of Western Canada’s oldest trails – the Red Coat Trail (Highway #13). This was the original route taken by the North West Mounted Police on their historic march west in 1874. They set up a satellite police detachment near here, calling it East End, as it was the east end of their patrol from Fort Walsh (100 miles to the west).

Eastend is famously known as the home to Scotty the World's Largest T.rex. Scotty was discovered on August 16, 1991, by high school teacher, Robert Gebhardt. The T.rex Discovery Centre was built to contain the 65-million-year old fossilized remains of the first *T. rex* found in Saskatchewan.



On the hilltops you can see the last vestiges of the western frontier – Teepee stones, gathering circles, homesteader shacks, and wagon wheels and crumbling log corrals. One can envision the massive herd of buffalo that once roamed oceans of waving grasses.

The Frenchman River winds along the north side of town. The river attracts an abundant variety of birds, water fowl, fish and pond life and is home to a wide variety of wildlife.

Visit Eastend, a community that offers natural beauty, a vibrant arts community and a rich historical past. From breath taking views, boutique shopping, museums, pottery studios, art galleries, and restaurants, to taking in a historical hiking or driving self-guided tours. Play a round of golf on our stunning green 9-hole golf course then cool off at our new Swimming Pool and Splash Park. Spend the evening star gazing at the Wilkinson Memorial Observatory, making every minute of your spectacular day and night in Eastend relaxing and memorable.

You may choose to live in Eastend. A small town offering the best of both worlds; the safety of a small community with all the services you need. These include a day care centre, school K to 12, and a dedicated local library. There are year-round activities for all ages, including a Rink, Swimming Pool & Splash Park, Golf Course, Campground, Museum, restaurants, hotel, motel, affordable housing, and Wolf Willow Health Centre. The beautiful open spaces have attracted nature lovers from around the world to come and visit and then make their home in this beautiful town.

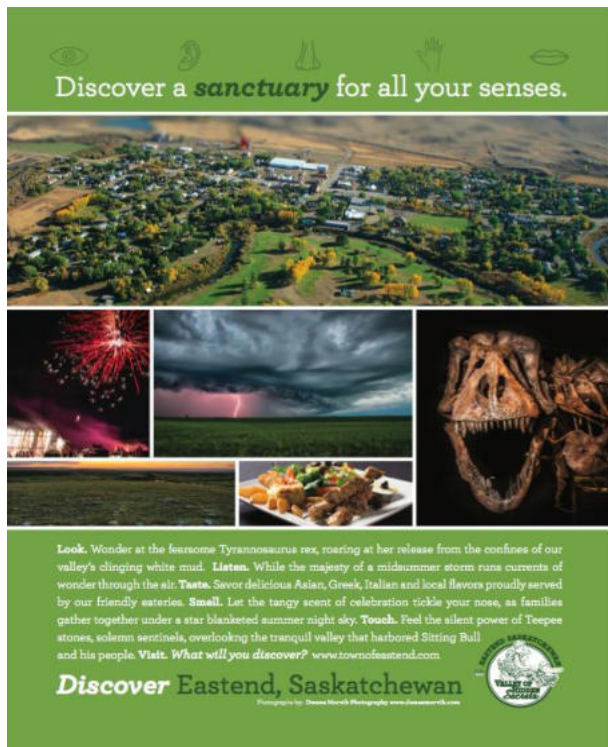
Business opportunities in Eastend are always open to creative and imaginative people. Eastend is a progressive community that offers incentives to new businesses. In this ever-changing world, the reality of living in a tranquil community - with global connectivity - combines to offer a unique environment where you can work remotely and enjoy the peaceful calm and quiet evenings under the stars.

Facts and Statistics - 2021 Census

- Population in 2021: 607 (20.7% population increase from 2016)
- Total private dwellings: 335
- Private dwellings occupied by usual residents: 267
- Population density per square km: 232.5
- Land area in square km: 2.61
- Average age of the population: 50.6

A new Direction:

In 2016, the Eastend Town Council decided to take a new direction on Tourism and Economic Development. A Tourism Advisory Group was formed, with stakeholders from different areas of the Town, including government, businesses, education and community representatives.

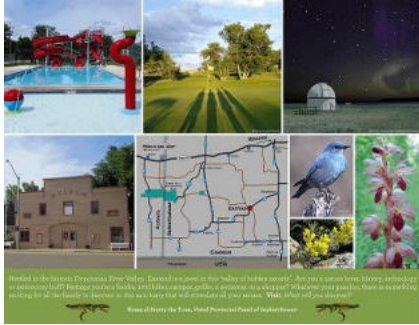


The two main objectives were: 1. to create a more modern and dynamic approach to Tourism and Economic Development; 2. to increase awareness of Eastend as a must-see tourist destination in order to attract visitors and generate new revenue streams to support local businesses.

One of the first areas of focus was the Development of a Tourism Campaign that included a new webpage, town brochure, visitor map and guide as well as advertising, around the theme of "Discover a *sanctuary* for all your senses... Discover Eastend, Saskatchewan".

This was all about getting potential visitors to wonder what they might *See, Hear, Smell, Taste and Touch* on their visit to Eastend.

The Town offers a unique experience for every visitor. From breath-taking views, museums, pottery clay studios, art galleries, and restaurants, to taking in a historical hiking trail or driving self-guided tours. Those more active can play a round of golf on



our stunning nine-hole green golf course, then cool off at our new community Swimming Pool and Splash Park. Visitors can spend the evening of their perfect day star gazing at the Wilkinson Memorial Observatory making every minute of their spectacular day and night in Eastend memorable.

By early 2018, over 8,000 brochures had been distributed across Canada, the United States and Mexico. Tens of thousands of dollars' worth of free media was generated, and a record number of visitors and tourism dollars were attracted to our little town.

Eastend's "5 Senses" creative approach captured attention on a provincial, national and international level:

Eastend was featured on **CBC Radio's Blue Sky**. CTV's national morning show "**The Social**" travel section included Eastend in their "**Canadian hot spots you should probably consider visiting**" as selected by Heather Greenwood-Davis, Editor, National Geographic Traveler magazine.

MSM.com Travel selected Eastend as one of 20 top global "**Up and Coming Destinations Every Canadian Needs on Their Radar in 2018**" alongside well-established international destinations like, Brisbane Australia, Lima Peru, Bogota Columbia, Guanajuato Mexico (Unesco's World Heritage site), Wako Texas, Antelope Canyon Arizona, Ishigaki Japan and many others.

Eastend was recognized as **Provincial Winner of Communities in Bloom 2017** and in **2018** in the Provincial Population Category 500-1000. In 2017 the community was awarded **Special Mention for Community Theme** "*Discover a sanctuary for all your senses... Discover Eastend, Saskatchewan*". In 2018 Eastend was awarded **Special Mention for the Town Square**.



In April 2018, Saskatchewan Tourism Board judges selected Eastend as **one of just three finalists** in 2018 ceremony Awards of Excellence for 2017 **Gil Carduner Marketing Award**. Our Town with a population of 503 was in the same category with well-established organizations like the Saskatchewan Roughriders Football Club Inc. and the Wanuskewin Heritage Park.

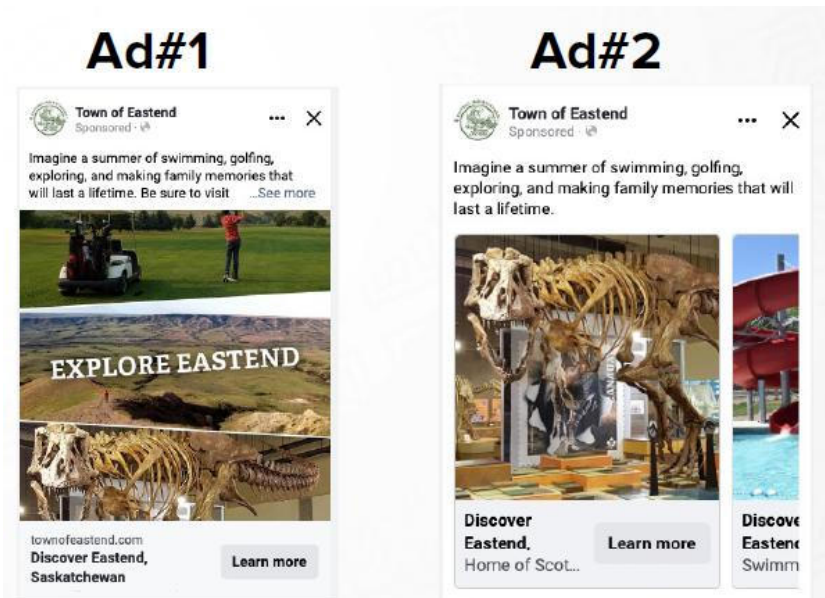
In May of 2018, SEDA (the Saskatchewan Economic Development Alliance) invited Eastend to attend their Saskatoon Conference. There we accepted the Award as the **Provincial Winner of the SEDA Innovation Marketing Award**.

In 2019 Eastend was awarded, jointly with the RM of White Valley, the Saskatchewan Municipal awards for **Regional Cooperation, Tourism and Re-Branding**. The awards were presented at SUMA and SARM.

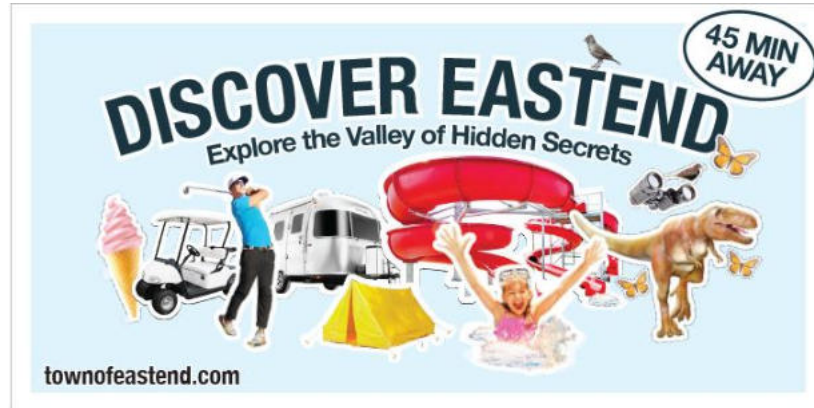
Thanks to our successful Tourism and Branding Campaign, the town received a \$20,000 grant from Tourism Saskatchewan under the Marketing and Event Partnership Program (MEPP). This grant allowed the town to design and launch a new website in March 2021 and 3 new promotional videos were produced.



In 2022, the town applied again for Tourism Saskatchewan funding under MEPP and received a \$15,000 grant.



This grant allowed the town to hire Homefield, a marketing company to help the town design and launch a social media online marketing campaign; and a new Billboard will be set up by Cypress Hills Interprovincial Park, with the aim of attracting more tourist to the town.



Through the Rural Resilience Program, the Saskatchewan Economic Develop Alliance (SEDA) helped the Town in developing a new Economic Action Plan.

The plan focusses on the Town’s Strengths, Unique Selling Points, Challenges and Opportunities. It highlights the Strategic Priorities in the following areas:

1. Infrastructure Development
2. Residential/Business Attractions & Retention
3. Tourism Sector Development
4. Marketing (residential, business and tourism)
5. Fund Development
6. Community Building

To implement the plan, a Tourism and Economic Development Committee was formed, bringing together the Eastend Chamber of Commerce and a diverse group of private sector stakeholders.

Among several initiatives, the Committee fundraised to install a new billboard at the town’s east entrance and is also working toward replacing the billboard on the west side.



TIDINESS EFFORT

A sanctuary for all your senses.



Our focus is to have visitors truly experience our community in every sense. To help them see, hear, taste, touch and feel the beauty and tranquility that Eastend offers. We use river rock throughout the town reflecting the fact that Eastend is uniquely entwined in the arms of the Frenchman river. We are striving to keep everything low maintenance, cost efficient and long-lasting by using materials and vegetation that are native to our area as we know it can withstand our drastic climate changes. We would also like to use landscaping brick throughout the town (low maintenance, long standing and easy up keep, with "L" shaped edging for easy mowing). Our main goal is to keep everything in unison and communicate tranquility in every sense throughout the whole town.

Welcome to Eastend – East and West Entrance

The signs are located in a grassy area on our towns' east and west entrance. The signs are truly beautiful, and blend into its natural background. We have two small solar lights shining up on the signs at night to draw attention to them. Their base is surrounded with river rock. Colorful perennials were planted to brighten the area and draw more attention to the signs.



East Entrance



West Entrance

Information Sign



Just down the highway from the west entrance Welcome sign, is this covered information Kiosk. Along with the entrance signs, the Kiosk base is surrounded with local Frenchman River rock. A weather protected map and visitor guide holder has been added for visitors to learn more about our town and surrounding valley secrets. Transparent, weather proof

pamphlet holder(s) have also been placed for visitor convenience at the Town Square and the Town's Park/Campground.

The Town is maintained by a crew of 3 full time employees and 4 summer employees, to help during the busiest time of the year. One of the employees is dedicated to watering the 80 town planters and caring for the campground.

Businesses are encouraged to maintain the front of their establishments.

For many years, the Garden Club selected the flowers that would be planted each year and worked together with the Town workers to design the color combinations and help plant the flowers and plants. Volunteers walk around town checking the flower pots and clearing them of dead leaves or flowers.



The planters have been expanded to include the Campground to further enhance the overall experience visitors enjoy.

In 2020 a formal Eastend Communities in Bloom Committee was formed, with the continued support of the Garden Club and the Tourism & Economic Development Committee.



To keep our streets clean, garbage cans are situated around Main Street, in the Town square, campground and Trans Canada Trail.



Bylaw No. 637/05: To provide for the abatement of nuisances within the Town of Eastend, dilapidated/unoccupied buildings, overgrown grass and weeds, untidy and unsightly property, maintenance of fences, junked vehicles, etc.

Bylaw No. 644/06: Building permits, including demolition of removal of buildings.

Bylaw No. 610/03: To provide for control of unnecessary noise

Bylaw No. 680/10: Sidewalk clearing, including snow, ice or other debris so as to prevent injury and inconvenience to pedestrians.



A Town of dog lovers, Eastend Bylaw No. 690/11 Dog & Cat bylaw: Licensing, Regulating and Controlling. Dogs have to be on-leash and owners of pets must pick up their dog's waste.

To facilitate this, bag dispensaries have been installed in the Town Square, Campground, Kin Park & Children's playground as well as both ends of the Trans Canada Trail.

To control the cat's population, "live traps" have been set around town. Unless they have a license, cats will be relocated to farms who have expressed an interest.

To enforce bylaws, the Town council has joined the communities of Frontier, Gull Lake and Shaunavon and has hired a Regional Bylaw Enforcement Officer.



ENVIRONMENTAL AWARENESS

The Town of Eastend is aware of the impact of human activities on the environment, and the importance of best practices with regards to water and energy conservation.

Water Plant

The First water plant in the Town was set up in the 1950's and in 1975 was upgraded. Nevertheless, government regulations have changed, turbidity of the river has increased over the years, and as the equipment gets old filters can't handle the work. Over the last few years, and thanks to the Canada 150 Building Fund, the Town has partnered with the Provincial and Federal Governments to build a new water plant that will allow the Town to become more water efficient.

On August 25, 2017 the governments of Canada and Saskatchewan announced funding to upgrade the Town of Eastend's water treatment facility. Construction on the project began in early June of 2020. Work involves building a new water treatment plant, water reservoir and associated works. The Eastend Water Treatment Plant Upgrade Project was completed in August 2021. The new Water Plant will support the Town's economic growth and development, improve the quality of drinking water and help protect local waterways and ecosystems for years to come.

Canada

TOWN of
EASTEND

Saskatchewan



The estimated total cost of this project is \$8-million. Under the New Building Canada Fund program, the Government of Canada will be contributing up to \$2,178,333 to the project, the Government of Saskatchewan will also be contributing up to \$2,178,333, and the Town of Eastend will fund the remainder.

"Thanks to funding from the governments of Canada and Saskatchewan, the Town of Eastend can keep moving forward on this important infrastructure project for our community, which will improve the quality of our drinking water, along with the efficiency and service reliability of our water treatment facilities."

*His Worship Jesse Gordon,
Mayor of the Town of Eastend*

Water conservation

WATERING DAYS SCHEDULE

The Council of the Town of Eastend wishes to remind residents of an On-Going Watering Schedule:

Designated Watering Days always in effect:



- Residents West of Maple Avenue: Tuesday, Friday and Sunday.

- Residents East of Maple Avenue: Monday, Thursday and Saturday.

Absolutely no watering on Wednesday!

The Council of the Town of Eastend thanks you for your cooperation in complying with this watering schedule.

AFTER HOURS PUBLIC WORKS CONTACT: (306) 295-7497

A close relationship between the Town Office and the community is important in order to maintain our vital water supply.

For example, even with a new water plant, town residents are asked to minimize water usage with an on-going watering days schedule, in an effort to conserve precious water resources. Although this has an impact on our ability to keep our town as lush as we would like, our residents and town crew continue to do all they can to keep our town, green, bright and blooming.

Bylaw No. 464/94: watering hours and days of lawns, gardens and flower beds.

Garbage and Recycling

In 2015, the Town hired the services of Triways Disposal Services Ltd for residential waste collection and recycle. The services provide Curbside 'Combination Recycling and Garbage Collection', with every household being provided with 2 carts, 1 cart for Garbage (Grey color) and 1 for Recycling (Blue color); with weekly alternating collection of Garbage and Recyclables.

From April 1st to October 31st, there is a monthly yard clean up and organic waste collection, where the staff of the Town collect branches, leaves and grass clippings. These have to be placed in clear garbage bags and stored separately from any other household waste. It is taken to the Town's transfer station that accepts trees, branches, leaves and grass clippings, pruning and clean untreated wood.

All other materials are to be taken to the regional landfill outside of Dollard.

Bylaw No. 649/06: for the collection and disposal of domestic waste and refuse.

Bylaw 681/10: Collection & Disposal, site regulations, garbage reception containers.

Bylaw 755/2023 To Provide a Waste & Recycling Program as a Public Utility.

In 2016, the Town initiated a program to encourage the use of composters. By purchasing 40 Earth Machine Compost 80-gallon bins, and selling them at cost to residents, this program was a success.

The program will be expanded to include rain barrels, to encourage the use of rain water for gardens and flower beds. Currently we are in the process of researching prices and

types of rain barrels that will look attractive and improve the overall view of the Town properties. This program will also include the use of rain barrels in the campground for use in watering the new planters in the campground.

**Eastend's
Community Clean-up**

Friday, May 13 to Sunday, May 15

A chance for Eastend residents to drop-off items free of charge!

Campground Ball Diamonds.
Friday, May 13 5pm - 8pm
Saturday, May 14 10am - 8pm
Sunday, May 15 9am to 12pm

Dispose of goods on the designated labelled bins

ALLOWABLE MATERIALS

<ul style="list-style-type: none"> • Municipal Solid Waste (household garbage) • Scrap Iron • Appliances • White Metal • Barbed Wire (must be rolled up) 	<ul style="list-style-type: none"> • Creosote Lumber (Prior notification required) • Painted Wood • Compost • Concrete • Asphalt • Shingles
---	---

Transfer Station
Saturday, May 14 10am - 12pm & 1pm - 5pm

Allowable Materials

<ul style="list-style-type: none"> • Trees Branches • Leaves • Grass clippings & pruning 	<ul style="list-style-type: none"> • Clean untreated wood • unpainted pallets • unpainted boards
---	---

For more information call Val @ (306) 295-7406

NON-ALLOWABLE MATERIALS:
Batteries, Asbestos, Brake pads, Hazardous Waste, Pesticide Containers, Tires, Pressure tanks (propane bottles, spray foam bottles, etc.), All liquids including sewage/waste water, Tools, oil including cooking oil, etc. Dead animals including BIR, "Hot" foods, burning barrels, Green bags (recycle), Offroad Liners (heavy plastic), Offroad Gear, Plastic, Rubber, paper, Paint & Electronics (take to Sarcan)

Since 2021, the Town has organized a Community Clean-up. For 3 days in May, residents can drop-off items free of charge. Designated labeled bins are placed in the Eastend Campground, volunteers' direct residents to the designated bins and help residents to dispose of their items.

A list of allowable materials is distributed and posted around town. Full bins are taken to the regional landfill.

The Town's transfer station is open for disposal of trees, branches, leaves and grass clippings, pruning and clean untreated wood.

This program has been very successful. Unfortunately, due to budgetary constraints, the Town postponed the program, but plans to continue in future years.

Earth Day

In 2022, Eastend Communities in Bloom Committee organized a spring clean-up of the Trans Canada Trail. Volunteers cleared garbage entrenched in the bushes alongside the trail and close to the river.



Tires, scrap metal, old car parts, barrels, pipes and various garbage was collected by volunteers and disposed of by the town.

For 2023, the Committee organized a clean-up of the Town. Volunteers were allocated a section of the town to clean up.



In 2024 the Committee organized a bottle drive to raise funds for future projects. Thanks to our residents' support, the committee raised \$485.50.



In 2025 the Committee organized a clean-up of the east entrance tree area.

Eastend Town Square and Green Space.

In 2020, Communities in Bloom awarded the Town of Eastend the Environmental Action Award for the Development of the Town Square.



The Town Square and Green Space was developed on the previous site of a bulk oil operation and local gas station, as well as an old garage that was formerly used as a reptile zoo. Due to previous operations the area needed to be reclaimed with very little soil disturbance. The Town Square is a gathering place for the community and hosts regular Garden Market days during the summer months. In addition, we have regular community events, fund raiser barbeques, musical events and celebrations of all kinds.

The Town Square and Green Space is an on-going project, developed by the Town of Eastend in collaboration with the Tourism and Economic Development Board, the Garden Club and the Communities in Bloom Committee.

Phase 1

Development of the “Out Door Market” and floral beds constructed.

Phase 2

Construction of public washrooms and the building of benches, 3 pergolas and additional self-watering hanging and ground planters.

Phase 3

Planting of trees and perennials. The trees were chosen for their ability to be environmentally responsible, have minimal maintenance, would be drought tolerant once established and provide shade and beauty. Specifically, poplars and willows were chosen because these species have root systems which have a positive effect on Phyto regeneration of contaminated soil.

5 Assiniboine Poplars - on west side of property, define property and provide shade.

2 Golden Willow - mid area west side.

2 Tartarian Maple – mid area west side.

5 Dwarf Korean Lilacs – provide privacy hedge by washrooms.

1 flowering crabapple – South east, provide visual interest and good spring color

Perennials added to some planters in the Farmers Market area.

Russian sage, Coneflower, Autumn Joy sedum, Liatris and Ornamental grass

The public works employees, with the assistance of the Garden Club and Communities in Bloom Committee, create and plant the colourful and celebratory floral displays throughout the community.

URBAN FORESTRY



Eastend native trees are River Willows, Red Willows, Black Poplar and Chokecherry bushes just to name a few. Most of them grow around the river bank that surrounds the town.

It was somewhere around the 1939 when the Dam was built,

along with irrigation ditches around town, that beautification initiatives took place to plant trees. Pine trees were brought down from Pine Cree Park and replanted, and poplar trees and other varieties were moved in from around the hills.

Cutting/replacement of trees

The Town of Eastend understands the importance of maintaining and keep planting trees in our town. The Town crew looks after the maintenance and well-being of trees in public property.



As part of the beautification of the Town Square, in 2017 the Garden Club and a group of volunteers planted poplar trees.



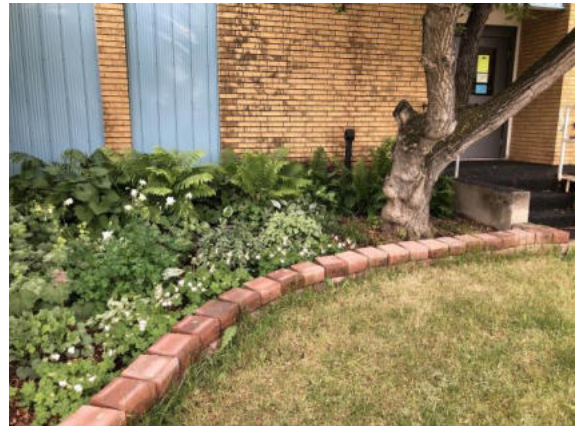
In 2018, they planted two Yellow Willows, a Multi-stem Hot Wing, and a Maple Tatarian Hot Wing, as well as a row of Dwarf Korean Lilacs. Because the town square is situated on contaminated soil the garden group specifically chose willows and poplars to assist in the phyto remediation of the soil.

The Garden Group also planted 2 Spring Snow flowering crabapples (persistent) in front of the Wallace Stegner house and a Hawthorn tree was planted in the boulevard adjacent to the school parking lot.

The Eastend Library Garden is a project that started in 2014. The Garden Club built a bed in the angle of two brick walls of the building– the exposure is north and a little west, perfect for a shade garden – a bit of a rarity in our dry country. They all participated in removing the turf, turning the soil, and hauling in topsoil and compost. We chose shade plants known to survive in our climate: hostas, ligularia, heuchera, aquilegia, lady's mantle, cranesbill, daylily, lamium and ferns.

Over the years they have taken turns with watering and weeding duties. Homemade deer repellent has been applied as required.

When the bed became well established and was looking mature it was time to plant trees. In 2014, they planted a tree lilac, a bur oak and a tamarack. With the passage of several years the trees also settled in. A serpentine border of attractive blocks was added to the front edge of the shade bed. Plans are underway for the addition of a reading bench in front of garden.



This project has certainly spruced up our library entrance.



The Eastend Communities in Bloom Committee, in partnership with the Town of Eastend and the Saskatchewan Association of Watersheds, has planted over 100 trees as part of the Saskatchewan Tree for Life Program.

In 2021, thanks to a committed group of volunteers, including a team representing three generations, 50 trees were planted along the Riverbank by the Eastend Campground.

The trees included 10 Shrub Willow, 20 White Spruce and 20 Blue Spruce.



Communities in Bloom awarded the Town of Eastend the Trees and Urban Forestry Award for the Campground Planting Project.



In 2022 volunteers planted 50 more trees, a variety of poplar, willow, blue spruce and white spruce.

Each tree is protected with a wire cage to protect them from the wildlife and harsh winters. The Eastend Historical Museum donated 24 pre-cut rebar stakes for staking the wire down.

Due to harsh winter conditions and low survival rate of the seedlings, in 2023 the Committee and volunteers decided look for a suitable location to create a natural nursery where seedlings could be planted in a sheltered area off the Trans Canada Trail. The main purpose is to give the seedlings time to grown in a more protected area.

The Committee applied to the Shand Greenhouse operated by SaskPower for free seedlings. In order to qualify, the committee must use the seedlings to provide shelter belts and/or preserve the riverbanks and animal habitat. In May 20 white spruce seedlings were received by the Committee. To give them a better chance of survival, committee member Anne Arnal graciously allowed the seedlings to be planted on her property, north of Elm Street by the Trans Canada Trail across the berm where small evergreens are naturally growing under a tree. The goal is that our seedlings will thrive there as a nursery spot until they can be transplanted to town property.



The Committee has identified a second location by the campground where a second natural nursery will be established. The site will be cleared of debris and prepared so more seedlings can be planted and protected for a few years before they are ready to be transplanted to other parts of town.

Currently Town bylaws regarding cutting/replacement of trees on private properties are pending and subject to the Town Council discussion.



The Town worked with input from local interested groups, developed an approved a new Tree Policy. Bylaw No. 761/2023, Regulates and Enforces the Town of Eastend Urban Tree Policy Rules and Regulations within the Town's boundaries.



Every year there is a reminder that there is no pruning of Elm trees from April 1st to August 31st.

Our website contains further information, like how regular pruning outside the ban period helps keep elm trees healthier and less vulnerable to all types of diseases, including DED. Taking away the dead branches makes trees less attractive to elm bark beetles. And a reminder to residents that under provincial regulations, commercial pruners of elms must complete a recognized training program or be supervised by someone who has completed the program.

Bill Lee of “Lee’s Tree Care and Landscaping” has been the tree trimmer of the Town for several years. He knows all the trees in town and puts forward recommendations to the Town Council on pruning and trimming that needs to be done to maintain a green and healthy tree population. Bill’s knowledge and expertise will be invaluable as we begin to document our Eastend Tree Inventory.



In order to raise funds for projects, in November 2022, the CIB committee put up a call to the community to consider donating their unused purses to the committee. The purses were sold at the Kinette's Town & Country Fair. All proceeds going towards presentations on a variety of topics that will benefit the community, such as trees (selection, planting, pruning), composting, conservation, etc.

The response from the community was wonderful. From the purses donated, the Committee fundraised \$330.00, the unsold purses were donated to a Women's Shelter.

On Sunday April 30th, 2023, the Committee organized the first talk at the Eastend Library: “Tree planting, Selection and Ongoing Care” with Bryan Clary, Certified Arborist - Hwy 32 Tree Services.



Bryan’s presentation included: Introduction to Arboriculture, Trees in the Landscape, Basic Tree Growth Patterns, Tree planting, Wise Tree Selection and Formative Pruning of Young Trees.



Thanks to the *Parks for All Actions Grant*, the Committee was able to organize a series of workshops on several topics of interest for the community:

- Permaculture in your backyard
- Getting the most from soil and water
- Drought resistant perennial plants
- Planting trees
- Deer resistant plants

All the workshops were well attended.

As part of the Planting Trees Workshop, the Committee collaborated with other organizations, the Committee planted the trees and the organizations will look after them:

- Eastend School: 1 Crabtree
- Eastend Community Swimming Pool: 5 Asian Birch trees
- Regional Landfill: 4 Oak trees
- Eastend Campground: 2 shrubs, a Birch leaf Spirea and a Double Pkay Big Bank Spirea.

This year, the Parks for All Action Grant once again provided funding for more workshops organized by the Eastend Communities in Bloom Committee. Two workshops were already held on June 15th at the Eastend Town Square, where participants learned composting basics, followed by an introduction to worm farming. A composter donated by the Town of Eastend was raffled off to one lucky attendee. Building on that success, the Committee will continue offering workshops throughout the year on topics such as permaculture for youth, tree care and grafting, starting seeds, xeriscaping, mulching and water conservation, and a planter workshop. Workshops have been well attended, reflecting strong community interest in sustainable practices and environmental education.



Tree planting is very important to our community, The Blue Dog Studio presented the Eastend Communities in Bloom Committee with a \$620.00 donation. The money was the proceeds from donations from the Blue Dog patrons for future re-treeing of public lands/streets in Eastend.

In support of Eastend's ongoing beautification, the Eastend Kinette Club contributed funds toward the purchase of a flowering tree. This addition will provide shade and natural beauty, serving as a lasting feature for the community to enjoy for years to come.



Thanks to a generous scholarship from Innovation Federal Credit Union, Eastend Communities in Bloom was able to purchase trees, six tree watering bags, two self-watering planters, flowers, and potting soil. These items have been put to use enhancing public spaces throughout the community, helping to create a greener, more vibrant Eastend.

The Committee looks forward to organizing more workshops and continue the collaboration with other groups to plant more trees in the near future. For more information, please see attached the Committee's 2025/2026 Tree Work Plan.

LANDSCAPED AREAS

Our green spaces are fundamental to our community as they provide important social gathering places for residents and visitors to enjoy together.

Town Square/Green Space



This community space is a gathering place for the community and hosts regular Friday Night Markets during the summer months. In addition, we have regular community events, fund raiser barbeques, musical events and celebrations of all kinds. The Town Square is a vitally important space for community events.

During Dino Days community groups share the space to create the “Taste of Eastend and Outdoor Market”, with live music and family activities.



Since 2024 the Big Flat Folk Fest holds a Big Flat Market at the Town Square.

The latest new addition to our Town Square is a Continental Divide Rostrum, with local history and topography information depicted by an art tile jigsaw.



This project showcases the creativity and dedication of local artists, volunteers, and businesses. Inspired by the late Todd Millions, the Rostrum was conceptualized by Bryson Laboissiere of Zanj Art, who designed, painted, and glazed the tiles to depict a Bison Bull Boat crossing the Continental Divide. It was co-created and sponsored by the late Nick Saville of Nixavl Pottery, with support from potter Kelly Attrell. Nick managed logistics, tile production, and material coordination.

The concrete base was completed by Ron MacRae, with the metal stand fabricated by Colin and Chantel McCuaig and powder coated by Honey Bee Manufacturing. Signs were produced by Wheatland Machine Shop, and the Binkley family provided additional support.

Installation at the Town Square was coordinated by Kylie, Noel, and Jodey Entem, alongside the McCuaigs, with Helix Construction donating a picker truck to set the Rostrum in place. Future additions include shade sails and a rock garden.

At the Town Square, we've placed brand garbage dumpsters to match our faux brick planters and take-one leaflet holders for visitors to learn about all the towns' attractions.

Town Park / Campground:



Our beautiful town park and campground features 43 well-maintained campsites, a fully equipped playground, two baseball diamonds, a food booth, and a cook shack—making it a perfect spot for both relaxation and recreation. The park is also home to major community events, including the Big Flat Folk Fest, which draws visitors from across Canada and the United States, and Dino Days, which kicks off with fireworks, beer gardens, and family-friendly activities.



We keep our park well maintained and it is busy all summer, with different events, tournaments and concerts.

Streambank Golf Course

The Streambank Golf Course is a beautifully treed 9-hole course that winds along the banks of the stunning Frenchman River in Eastend. With manicured grass greens, watered fairways, and yardages of 2090 yards for ladies and 2308 for men, it offers a fun and scenic challenge for golfers of all levels. The river comes into play on four holes, adding to the course's unique character.



Eastend's original golf course was located in the hills to the north, a rugged six-hole, par-21 layout with sand greens and plenty of sagebrush. In 1967, the course was moved to its current location, and by 1976, more than 200 trees had been planted to enhance the landscape.

Today, the course is home to weekly golf nights, golf tournaments, special events, and a fully licensed clubhouse and deck where golfers can relax and enjoy a post-round meal.

Swimming Pool and Splash Park:

The Grand Opening of our new Community Swimming Pool and Splash Park was on July 29, 2016. A true testimony of community collaboration, over 100 volunteers offered their time and skills to complete the construction. The 45-year-old swimming pool was replaced with this new and improved swimming pool.



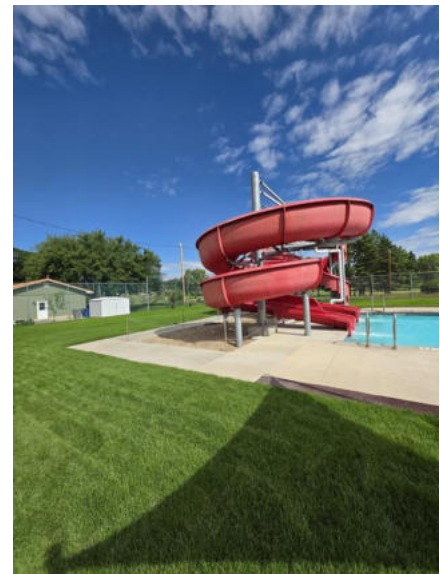
Thanks to donations, fundraisings and volunteer work our community bonds together around this new summer gathering site that provides summer employment for our youth.

The Eastend Swimming Pool is a one-of-a-kind facility in southwest Saskatchewan, acting as both a social and fitness hub for the town and surrounding rural communities. It offers public swimming, swimming lessons, fitness classes, and valuable employment opportunities for local youth. The pool promotes physical well-being, fosters community connection, and contributes to the local economy by attracting visitors and supporting tourism.

The Swimming Pool Board continues to work hard to manage, maintain, and improve the facility. This year, with the help of grants and generous donations, volunteers successfully installed new sod and a sprinkler system.



Communities in Bloom also continued their collaboration with the pool. Thanks to donations collected at The Blue Dog in April 2023, along with your recyclable bottle donations, we were able to purchase six trees to enhance the Eastend Swimming Pool grounds.



Three Amur Chokecherries (*Prunus maackii*) and three Gladiator Rosybloom Crabapples (*Malus 'Durleo'*) were sourced from Frontier Flower Patch and planted on a cool, wet day that's perfect for helping them take root and thrive.

T.rex Discovery Centre

The T.rex Discovery Centre (TRDC) is home to Scotty, the world's largest and most massive T.rex ever discovered. This 65-million-year-old fossil is one of the most complete T.rex skeletons in the world and draws thousands of visitors each year from across the globe.



It all began on August 16, 1991, when Eastend high school teacher Robert Gebhardt joined a group of palaeontologists on a fossil expedition along the Frenchman River Valley. Within hours, he uncovered a tooth fragment and a tail vertebra, clues that would lead to one of the most significant dinosaur discoveries in Canadian history.

Excavation began in June 1994, attracting more than 6,000 visitors to the site. The skeleton, now known as Scotty, is over 65 million years old, Saskatchewan's first T.rex, and 75% complete, making it one of the best-preserved specimens in the world.

Each year on August 16, the Centre hosts a celebration of Scotty's discovery, featuring special activities and birthday muffins to honour the day this iconic dinosaur was found.

The TRDC also showcases other fossil specimens that can be found in Saskatchewan and the surrounding area.



Scotty holds special significance as Saskatchewan's official provincial fossil. On Thursday, June 7, 2018 the Honorable Gene Makowsky, Minister of Parks, Culture and Sport, toured the T.rex Discovery Centre to pay a visit to Scotty the T.rex, to mark this important designation.



Each season, the TRDC features new exhibits and hands-on activities. Children can experience what it's like to be a paleontologist in the interactive Paleo Lab or search for fossils in the outdoor dig pit.

Visitors can explore the ongoing research at the Centre, shop for unique gifts and dino-themed souvenirs, and take in the sights along the T.rex Discovery Centre Nature Trail overlooking the town of Eastend.

Rodeo Grounds Arena

In 1914, the Eastend Sports day program was expanded to include a two-day stampede with mule roping, bareback mule races, cow pony races and other riding events. A grandstand was built as well as holding pens. The stampede was held without an enclosing fence – riders on horseback surrounded the area where the competitions took place.



A group of dedicated volunteers fundraised for 9 years to re-build the rodeo arena. Supported by other volunteer groups and the Town and RM 49 of White Valley employees, the old arena was dismantled and the new one was created.

The new arena was officially inaugurated during Dino Days' annual Light Horse Show on July 23rd, 2017.



On May and June 2018, new improvements were made, including a new booth, power, sound system, bleachers, just in time for the first "Mini Chuck wagon Races, CCA Saddle Bronc Riding & Redcoat Classic Dog Trials" on June 29-30. This new event attracted people from other provinces and the USA.

Recent additions include a new announcer booth in 2021 and a tin roof for the food booth was installed in 2022.



*Light Horse Show
– Heritage Circuit*

Southwest Emergency Response Centre / Fire Hall



Our Downtown Core has been further developed with the addition of a new \$1.2M Regional Emergency Response Centre (ERC).

Now fully operational, the public Grand Opening celebration of the Centre took place in November of 2016. The ERC signage and two flagpoles announce to all that this center is here for the protection of the citizens and visitors. This project, a true testimony of regional cooperation was developed by the Town of Eastend, the RM of White Valley No.49 and the RM of Arlington No. 79.

In October 2021 a natural generator was installed. The latest addition to the Centre is a 1999 Superior International Fire Truck, purchased in 2022.

The Centre is the operations headquarters for all emergency measures in our area, including Fire and Rescue, Disaster and Ambulance services.

The Centre's conference room is used for training and Community Group's meetings.

NATURAL AND ARCHITECTURAL HERITAGE **CONSERVATION**

Conservation of our natural, cultural and heritage buildings are very important to our community.

Biodiversity

The Town of Eastend, along with qualified and passionate volunteers work closely to catalogue and preserve the flora, fauna and natural ecosystems in our area. With the dedicated assistance of the Native Flowering Plant People Group, and Friends of Pine Cree, a grant was secured to catalogue and print a Field Checklist for Plants of the White mud, Southwest Saskatchewan, as well as three brochures:

- White mud area Badland and Dry Prairie Plants
- Pine Cree Regional Park Forest Flowers
- Pine Cree Regional Park Grassland Flowers

These checklists and brochures are distributed to residents and visitors interested on the Flora and Fauna of the White mud and Pine Cree areas.

Grants and donations make the reprinting and updating of these important catalogues an ongoing work-in-progress.

In addition, a Native Bird Checklist of Birds of the White Mud, South West Saskatchewan is maintained and catalogues over 300 unique species of birds found in this valley sanctuary.



The December volunteers from the community participate in the annual bird count. Records are sent to Nature Saskatchewan.

Three auto tours and a walking tour have been designed by volunteers to help residents and visitors enjoy the beauty of Eastend and surrounding areas.

Auto Tour 1: The Frenchman River Valley

Auto Tour 2: The Bench

Auto Tour 3: The Continental Divide

Walking Tour: The Riverbank Trail



Wallace Stegner House

The restored and maintained boyhood home of Wallace Stegner, a famous writer, author, and environmentalist, is a proud addition to the town. Stegner's father designed and built the home in 1914 when they homesteaded in Eastend.



The community and geography made an indelible impression upon young Stegner and was the inspiration for much of his writing. Stegner recalls his boyhood experiences in his award-winning book *Wolf Willow*.

The Stegner House is a Heritage site. In 1988, it was purchased by our local Arts Council whose volunteers restored the house under the guidance of the Saskatchewan Heritage Foundation. Numerous volunteers spent many meticulous hours restoring the house over a period of two years. It officially opened in 1990 and is used as a Writer/Artist in Residence, as a tribute to Wallace Stegner. To date, the house has hosted over 150 artists from around the globe including writers, artists, photographers, playwrights and dancers. The list for resident applicants continues to grow.



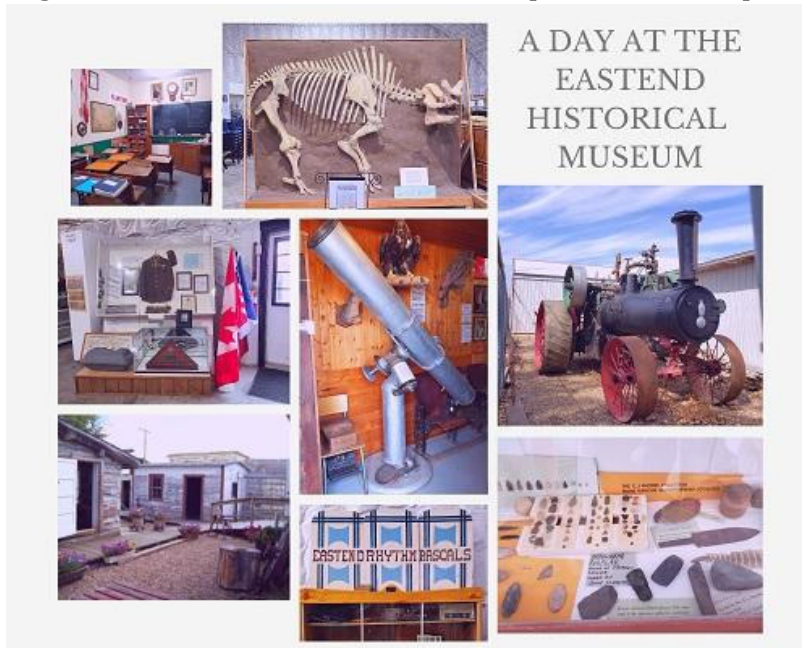
In 2018, the Garden Club planted two white flowering ornamental crabapples and a dark purple lilac tree at the Wallace Stegner House.

In 2025, an Eastend Arts Council member invited Communities in Bloom to help revitalize the flower beds at the Wallace Stegner House. The result was a successful day of teamwork, shared purpose, and renewed beauty.

This project not only enhanced a key landscaped area but also demonstrated how partnerships between local organizations can celebrate heritage while improving public spaces. By blending art, history, and gardening, the Eastend Arts Council and Communities in Bloom created lasting impact—both in the garden and in our community spirit.

Eastend Historical Museum

The Eastend Historical Museum and Cultural Centre Inc. (EHMCCI) is the community organization whose mission is to preserve and promote the history of Southwest Saskatchewan. It serves as a Tourist Information Centre and as a community resource to its cultural activities.



At the Museum, one can see what life was like for new settlers in the Southwest Prairies. Learn about the history of Eastend and area. 'Corky' Jones one of Eastend's earliest settlers founded the museum with his collection of locally discovered fossils and dinosaur bones.

The Museum includes the "Tie Rail Ranch Log House" built in 1909 by Donald Corry. The

Log House was moved to the museum in 1987. It has been refurbished with artifacts from that time period.

The Machine Shed includes a 1903 Case steam engine, 1927 Federal Truck, stage coaches, miniature steam engine and a firefighting water pumper.

The Museum also includes a school room and medical room. The main building has valuable collections on different topics that are all important to the area, like the Wilkinson Telescope – hand built by a local resident.

Activity Centre (Old Eastend School)



Recreational events are held regularly at our local Activity Centre by visitors and residents. Regular events include musical jam sessions, card and shuffleboard tournaments, craft and arts events that keep our seniors active, engaged and entertained.

A new roof was needed, and thanks to the fundraising of the

Activity Centre Board and a grant the new roof was put and finish in mid-July 2018.

The Board is now working on renovations to maintain this important building for future generations and become a safe, viable and accessible hub for our Seniors and our whole community.



The Steel Bridge



A notable landmark, the steel bridge was built in 1925. With the town expanding, and the need for residents and travelers to be able to have access to the North, the bridge was raised two feet in 1928 and concrete posts were installed in 1947. The steel bridge was designated an official Heritage Site in 2016.

Planning is underway for the beautification of the bridge that includes watering planters like the ones featured in the downtown. These are planned to be installed on both sides of the bridge which leads visitors up to the T.rex Discovery Centre.

Houses of Eastend

A group of enthusiastic volunteers has formed a team to preserve the history of Eastend's houses. They meet regularly at the library to share research, photos, and stories, focusing on some of the town's oldest homes and the people who lived in them. The project highlights Eastend's unique architectural and cultural heritage. Volunteers have interviewed longtime residents and explored archival records to bring these histories to life. Each home's story contributes to a broader understanding of the community's past.

With the research phase now complete, the group is applying for grants to support the next step. Funding will allow them to transcribe the material and turn it into a professionally designed booklet. The final publication will be shared with residents, visitors, and future generations. It will serve as both a historical record and a celebration of Eastend's heritage. The group hopes to have the booklet ready in the coming year.

Riverside Cemetery

To keep the final resting place for many Eastend former veterans and residents looking groomed and beautiful, the Town and the RM49 of White Valley have purchased a mower exclusively for use on site. In 2019, the Cemetery added a new Columbarium that includes niches and a memory wall.



The Cemetery Board and Town Council are currently exploring various beautification options including the planting of new shrubs and trees, to offer more shade as families visit and decorate the graves of their loved ones.

Thanks to a grant from Sask Lotteries, the Cemetery Board purchased a few self-watering planters. A specialist was hired to digitally map the cemetery. The Cemetery Project documents all the occupied and reserve lots up to May 2024.

Now residents and visitors can use the interactive map to locate graves online. The map can be downloaded from the town's website and print copies are available at the cemetery.



This project was made possible through funding from Hidden Valley Loan Coop and Saskatchewan Lotteries Community Grant program.

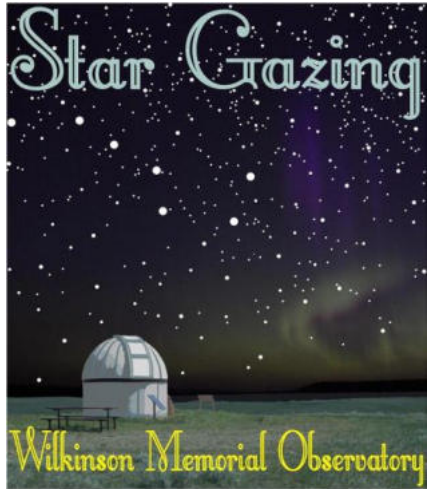


This year, CIB Committee was approached to plant a tree in honour of Eastend resident Gerry Egland, a beautiful and meaningful way to celebrate his life and legacy. Thanks to generous donations from his "Coffee Row Friends", a Mayday tree and a water bag were purchased.

In coordination with the Municipal Office, the Riverside Cemetery, and the coffee friends, it was agreed that the cemetery would be the most fitting location for this special tribute. The tree was planted on Tuesday, June 17, 2025 and there are plans to install a plaque at the site.

The CIB Committee will be launching a new *Memorial Tree Program* later this year to offer similar opportunities for tribute and legacy throughout Eastend.

Wilkinson Memorial Observatory



One of the finest observatories open to the public in western Canada. Named after amateur astronomer and blacksmith Jack Wilkinson.

In 1949, Jack built an 8inch reflector telescope, through which local residents gazed at the moon, stars, planets and many other celestial wonders.

This Observatory is a testament to the ingenuity of Jack Wilkinson who dreamed of seeing the stars closer up and personal. Jack died in 1953 just after he finished building the observatory. The dome was placed on top of the old school, then the new school, until it was moved to its present location 4 kms west of Eastend on highway #13.

The Eastend Astronomical Society (EAS) keeps the Observatory in good condition, and encourages the development of Astronomy in the Eastend area. Run by volunteers, EAS gives guided tours were local and visitors can spend a night gazing at the wonders of the universe under the beautiful Saskatchewan Skies.

Thanks to a grant by the Joint Recreation Committee of the Town of Eastend, RM of White Valley No. 49 and RM of Arlington No. 79, the observatory's old dome was replaced in June 2022.

In partnership with the Town, the Observatory hires an Astronomy student, who works part-time with the town and as an Astronomer in Residence and evening tour guide with the Observatory.



This summer tours are available every Monday, Wednesday, Friday, Saturday and Sundays of long weekends.

Eastend Scenic Rail Tours

Gary Southgate is a Saskatchewan Farmer with a passion for vintage train cars. Gary purchased his First Vintage Train Car in 2013. A 1929 Steam Engine (3101 CPR Locomotive). Only 2 of them were made in the world.



Over the years Gary has collected over 26 vintage train cars and engines. They have been stored in different places but Gary wanted to find a home for them.

He visited Eastend a few years ago and when the time was right, he decided, after a Canada wide search, that Eastend was the perfect place to bring his vintage rail cars and Train Station. The Eastend Scenic Rail Tours were established in 2022 and will be a draw card for tourist and train aficionados from around the world.

This new tourist attraction and vintage rail cars conservation is a work in progress. Gary started by purchasing land by the rail tracks as well as the Riverside Motel and garage.



The next step was to bring the vintage rail cars:
4 Engines: Canadian National Railway – Made in Kingston 1954 - 1957
20 Rail Cars – some will be used as Sleeping cars, they'll include tables and a kitchen.

Gary and team are working on painting and restoring the rail cars getting ready to go on the road. More rail cars will make their way to

Eastend. Gary plans include a Train Museum, to showcase the 1929 Steam Engine and document the history of trains and the railroads in Canada.



On July 26th, 2025 during Dino Days Weekend, Gary invited MLA Doug Steele, Eastend Mayor Alan Howard, Deputy Mayor Val Bidaux, Economic Development Officer Rosa Vázquez, Shaunavon Mayor Cal Vance and CHGDA Marketing Director Christine Broderick for a special trial run.

There may be two more public trial runs later this year. Once the tours officially launch, you're in for a spectacular scenic ride!

FLORAL DISPLAYS



Our Downtown Core

Over the years, the Town has added self-watering planters to our main street's sidewalks. We have re-covered the planters and garbage cans and painted them to match as close as we can with grey stone paint. We are currently considering additional enhancements such as putting up antique lights with hanging baskets along some areas of our downtown core.

The Eastend Communities in Bloom Committee, with the assistance of public works employees and volunteer groups, create and plant the colourful and celebratory floral displays throughout the community.

In 2025, the floral displays include: Castor Bean, Gaura, Vinca Vine, Salvia Hummingbird Falls, Fountain Grass (purple), Prince Tut Grass, Kangaroo Apple, Dracaena, 2 types of Gaillardia, Dorotheanthus – Mezoo, Petunias (assorted), Snapdragons (assorted), Violet Verbena, Pink Truffula Orange Calibrochoa.



Planter Relocation: Improving Community Spaces



As part of the Committee's 2024 Communities in Bloom action plan, our volunteers took on the important task of relocating several large planters and seven hanging basket brackets throughout Eastend. With approvals from the Town of Eastend and SaskPower, this project focused on creating more consistent, accessible, and impactful locations for our community planters.

Following a detailed walk-through and review of existing planter placements, volunteers proposed thoughtful changes to better highlight key areas in town. With the support of our Town crew, planters were moved during the week of May 12–15. This work was done to help create cleaner lines of sight, improve watering access, and make maintenance more efficient.

The CIB Committee working with our amazing volunteers and the Town staff helped make this relocation project possible. Their time and dedication helps creating outdoor spaces that are more organized, functional, and enjoyable for everyone.

Rejuvenating the Soil: Preparing for Healthy Growth



During the last week of May, Communities in Bloom volunteers took on the vital job of replacing the old soil in Eastend’s planters and hanging baskets. After more than a decade without being changed, the original soil had become compacted and nutrient-poor—making this upgrade essential for plant health and long-term sustainability.

Volunteers removed the old material, added fresh potting mix, and carefully replanted every

pot and hanging basket around town. The fresh soil will support stronger root systems, improve moisture retention, and give our flowers the best chance to thrive throughout the season.



This work represents more than gardening—it reflects the care and pride our community takes in maintaining shared spaces. A heartfelt thank-you goes out to the dedicated volunteers and supportive Town crew whose efforts are helping Eastend grow stronger, greener, and more vibrant.

Perennial Planters

The Garden Club takes care of five perennial planters that surround the main meeting area at the Town Square.



We're fortunate to have the support of dedicated volunteer organizations and generous local businesses in our town. For the second year in a row, **Frontier's Flower Patch** has kindly donated a beautiful variety of colourful petunias and annuals to brighten up Eastend's planters.

Communities in Bloom Takes Over Recycling Fundraiser at Town Square

Communities in Bloom has recently assumed management of the recycling depot at the Town Square from the Eastend Arts Council. The funds generated through this initiative support the group's ongoing volunteer work to enhance and beautify Eastend's public spaces.



The recycling project has deep roots in the community, beginning in 1990 when the Scouting Association started collecting bottles, initially storing them in an old house. To improve accessibility, they later constructed a collection box in a central town location.

Following the disbandment of the Scouts around 1999, the Eastend Arts Council took over the operation. Over the course of 24 years, funds raised through returned recyclables helped bring the Missoula Children's Theatre to Eastend. The recycling depot was rebuilt in 2017 and has been relocated several times within the town since then.

In spring 2024, stewardship of the recycling program transferred to Communities in Bloom, who have embraced the responsibility to manage this important fundraiser.

Community members are reminded to deposit only items eligible for cash refunds at SARCAN, as the depot functions as a fundraiser rather than a general recycling drop-off. This ensures continued support for Communities in Bloom's projects that contribute to the town's vibrant appearance.

Both the Eastend Arts Council and the Scouting Association acknowledge the community's longstanding support. Communities in Bloom looks forward to continuing this tradition of stewardship and community engagement.

Recent Beautification Projects

Efforts to enhance Eastend's public spaces continue to flourish, reflecting the town's shared commitment to beautification and hospitality. A newly constructed pole fence now lines a portion of Main Street, turning what was once a vacant and underutilized area into an attractive and defined space. Built by dedicated community members on privately owned land, the fence adds both structure and visual appeal, contributing to the overall charm of the town's central corridor.



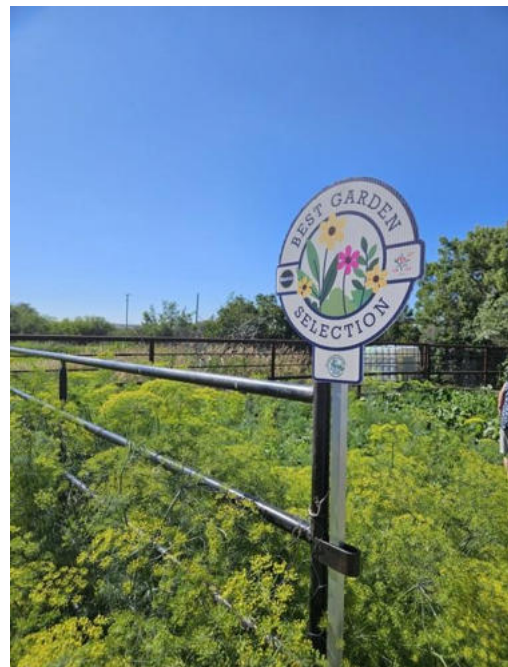
This thoughtful addition is further complemented by the installation of a bench, generously donated by residents who saw the value in creating a place for people to pause and enjoy their surroundings. Whether it's locals out for a walk or visitors exploring the community, the bench provides a welcoming rest stop that encourages people to slow down and take in the beauty of Eastend. Together, these projects are a testament to what can be accomplished when residents work together with pride and purpose to improve their shared environment.

Celebrating Beautiful Gardens in Eastend

To recognize the efforts of residents in keeping their yards clean and attractive, Eastend Communities in Bloom has participated in the Miracle-Gro Best Garden Contest over the years. This contest invited residents to nominate themselves or neighbours in various categories such as:

- Most Colorful Garden
- Water Conservation Garden
- Most Fabulous Vegetable Garden
- Most Deer Resistant Garden

In some years, the committee also selected standout gardens to be toured by Communities in Bloom judges during their visit to Eastend.





Building on this tradition, in 2025, Eastend Communities in Bloom has partnered with the Eastend Chamber of Commerce to launch a new initiative: **Yard of the Month.** This fun program celebrates the hard work and pride residents put into their outdoor spaces.

Whether it's blooming flowerbeds, neatly

maintained lawns, or creative landscaping, the Yard of the Month program highlights the beauty residents bring to the community. Two winners will be selected each month throughout the summer, with each receiving a Yard of the Month sign to proudly display.

This initiative is a wonderful way to thank residents for their contributions to making Eastend a vibrant and welcoming place to live.

Iron Signs

Thanks to donations and a grant from Sask Lotteries, Iron signs showcasing the flora and fauna of the area were made by a local welder and are now on display on main street.



Regional Collaboration

The Town of Eastend firmly believes that collaboration with our neighboring communities is key for our communities to thrive and be successful.

An example already mentioned is our Emergency Response Centre, a project developed with the RM of White Valley No.49 and the RM of Arlington No. 79.

A **Regional Economic Development Officers Group** was formed a few years ago to foment cooperation between communities in the Southwest.

The Group is formed by the communities of Abby, Cabri, Hazlet, Eastend, Frontier, Gull Lake, Leader, Maple Creek, Shaunavon and Swift Current. The Economic Development Officers meet once a month and share ideas and what is happening in their communities. Their first collaboration was a marketing campaign with social media influencer Ashlyn George, blogger and writer at *The Lost Girl's Guide to Finding the World*. Ashlyn toured the communities and posted on her social media platforms and blog. This project was funded with a grant from Tourism Saskatchewan under the Marketing and Event Partnership Program (MEPP).

The group is researching and exploring funding opportunities to support existing and new business developments in the region.

This year our region is embarking on a unique initiative to attract investment, tourism and new business via the Visitor Reception Centre on Highway 1 - We have a partnership including Town of Maple Creek, Saskatchewan, Town of Leader, Town of Gull Lake, Three Points Economic Partnership, Cabri, SK Hazlet, Saskatchewan, Village of Frontier, Town of Shaunavon, Abbey Sask, City of Swift Current and Cypress Hills - Grasslands Destination Area.



As part of this initiative, each community/organization has the opportunity to showcase their businesses/tourism offers.

An incubation program supporting new businesses (with an emphasis on young, women, Indigenous, and new Canadian entrepreneurs) has been created using display cases as pop up stores in the Centre.

Three female Eastend artists, a potter, a jeweler and a wool artist have the opportunity to display and sell their products at the Centre.

This initiative is made possible thanks to the Rural Opportunities fund and Community Futures Southwest.

Our **SW Waste Management Authority Regional Landfill** is another excellent example of what communities that collaborate together can achieve. The Landfill is managed by a Regional Board, formed by the Town of Eastend, the Town of Shaunavon, RM of White Valley No.49, RM of Grassy Creek No. 78, RM of Arlington No. 79 and RM of Bone Creek No. 108.



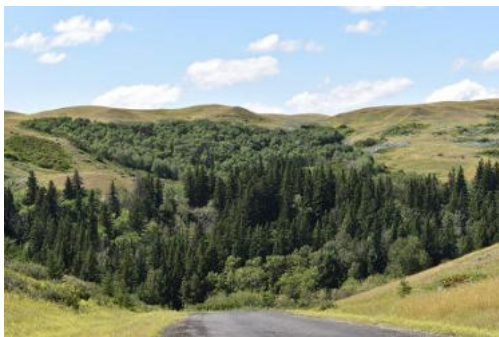
Manager Kylie Entem and her team have been planting trees and perennial plants. This year alone 450 trees were planted: chokecherries, lilacs and poplars. Perennial gardens were created. A pond to collect water and nourish the trees was built. In addition, two eaves trough tanks collect rainwater. As Kylie says *“just because it is a dump, doesn’t mean it has to look or smell like one”*.

Pine Cree Regional Park is Saskatchewan’s Natural Environment Regional Park.

The Park is managed by a is managed by a Regional Board, formed by the Town of Eastend, the Town of Shaunavon, RM of White Valley No.49, RM of Grassy Creek No. 78, RM of Arlington No. 79 and RM of Bone Creek No. 108.

A true gem, Pine Cree Park is named for the Cree who once camped here and the abundant “pine” trees that grow in the Coulee. It’s the perfect place for a picnic or a camping trip, complete with an outdoor kitchen and washroom facilities. Don’t forget to see if you can find the Hermit’s Cave!

Located in the southeast block of Saskatchewan’s Cypress Hills, 13 km. NE of Eastend or 32 km. W of Shaunavon or 50 km. S of Tompkins, (off Highway #1) on Grid #633, Pine Cree is Saskatchewan’s only true Natural Environment Regional Park and features a superb back drop to nature’s camping experience.



Dropping 100 meters (300 feet) from the surrounding prairie, Pine Cree is the perfect destination for anyone desiring a quiet, peaceful camping holiday, and offers a variety of campsites that range from secluded and private individual sites, to larger group campsites, many of which are situated along the headwaters of Swift Current Creek. It features two camp kitchens, pail-a-day-

toilets, a modern children’s playground, a ball diamond and nature trails. There are 28 non-serviced campsites that are based on first come – first serve: no reservations.

The natural history at Pine Cree features:

- rare orchid beds,
- natural prairie grasslands,
- dark starry nights,
- great birding opportunities,
- wildflowers,
- cougar sightings
- It is home to moose, white-tail deer, coyotes, bobcats, Pink-Sided Juncos, Mountain Bluebirds, Great-horned Owls, and Common Poorwill



Swift Current Creek continuously runs through Pine Cree Regional Park and is home to a variety of water-based creatures, including Brook trout.

Eastend and the Arts

Eastend is know as an artist community. The beauty of the surroundings and the Artist in Residence Program at the Stegner House has attracted artists from all over the World, with a large number making Eastend their home.

Since last year, the artists in town have collaborated to create the Eastend Art Walk, galleries and studios open to the public to display local and visitor artists from around the region.

On July 23rd, as part of Eastend Dino Days Weekend Celebrations, the latest edition of the Art Walk was a “Celebration of the Life & Art of Nick Saville”, who passed this spring. Nick was a treasured member of Eastend and the Arts Community, a mentor to many and the giver of the heartiest laughs.



Nixavl Pottery Studio was opened one last time with a beautiful display of Nick's Art and a few of his poems were on display too. Residents brightened the Library with Nick's art. In total over 40 artists participated on this project.

Nick always said that if there were 10 potters in Eastend that people would come by the busload. The Arts Community is working to make that vision come true!

On August 23rd, 2023 the Friday Night Market will take place in Pine Cree Regional Park, in collaboration with Eastend Arts Council, it will be an arts event celebrating Nick's life, with the attendance of 5 potters and other visual artists.

The talent of our local artists is limitless. The most recent addition to the town is a mural created by artists Trea Jensen and Bronwyn Schuster. The picture of them working together was awarded 1st place in the 2023 Saskatchewan Communities in Bloom "Take a Shot" Photo Contest".



Trea and Bronwyn decided to continue the project adding details to the original mural, new images to the north side of the building and a new mural on the east side.



This collaboration has brightened the town and there's talk of artists collaboration on more projects.

Residents Greg Donaldson and Tara Magee decided to transform their building into a beautiful canvas. Andrew Robertson did a wonderful job showcasing our most famous resident, Scotty, the World's Largest T.rex, while Jeff Goring (SONZ1) created a vibrant graffiti.



**On behalf of all the residents of
our beautiful town**

**Thank you for taking the time to
Discover Eastend!**

A sanctuary for all your senses...

